

Seiler Instrument Company

**Network Connection setup for
Cingular phones on the TSC2**

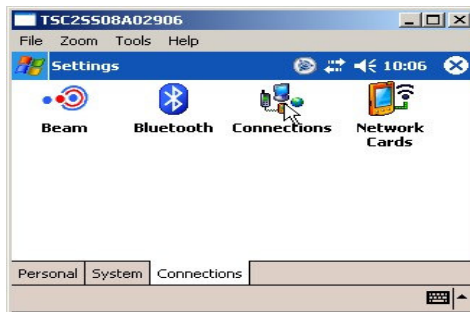
**Prepared By:
Jim Wyant**



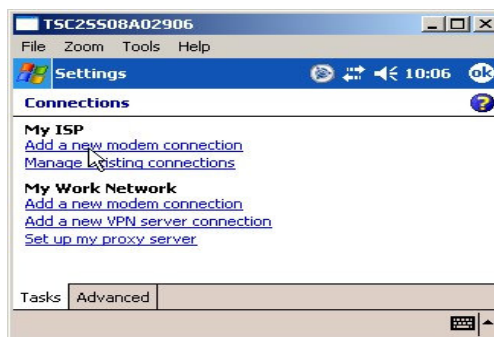
Select Start>Settings on the data collector.



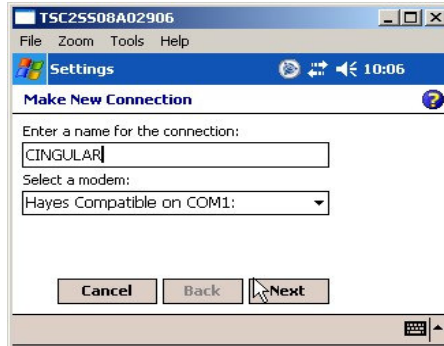
Select the "Connections" tab at the bottom of the page. Click on the "Connections" icon.



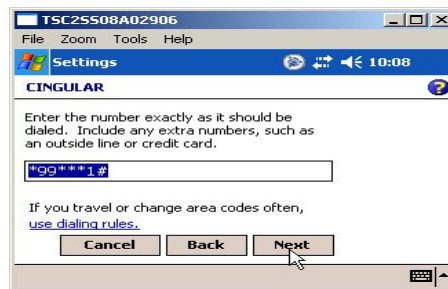
Select "Add a new modem connection" under MY ISP.



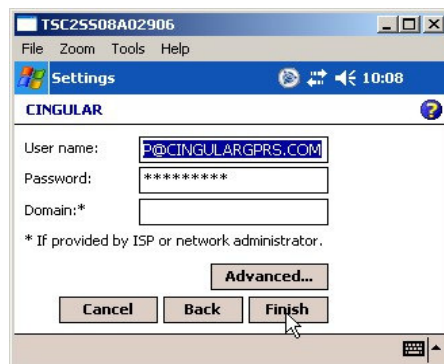
In the “Enter a name for the connection:” dialog, key in CINGULAR. If you are using a cable from the phone to the collector, make sure Hayes Compatible on COM1 is selected. **If you are using a Bluetooth phone, Make sure you set this field to Bluetooth DUN.** Select “Next” once you have these settings correct.



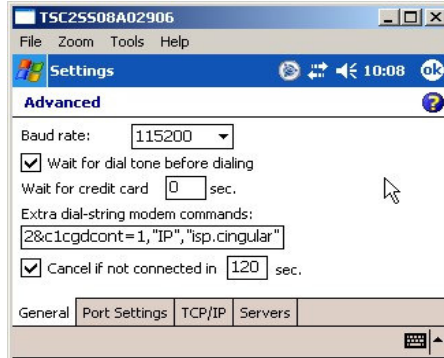
Enter *99***1# in the number to dial field and select “Next”.



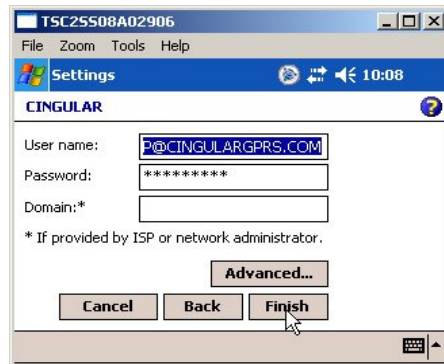
The User name will be: ISP@CINGULARGPRSCOM. And the Password will be: CINGULAR1. After filling in those fields, click “Advanced”.



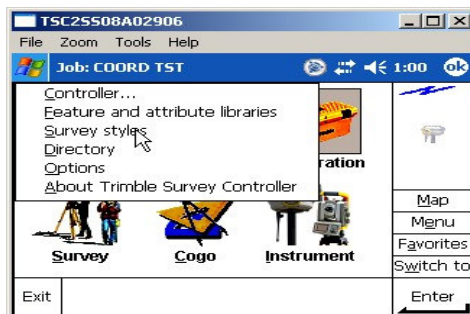
Set the Baud rate: to 115200. In the “Extra dial-string modem commands:” key the following in **EXACTLY** as shown: &f&d2&c1+cgdcont=1,”IP”,”isp.cingular”
Select OK in the upper right hand corner.



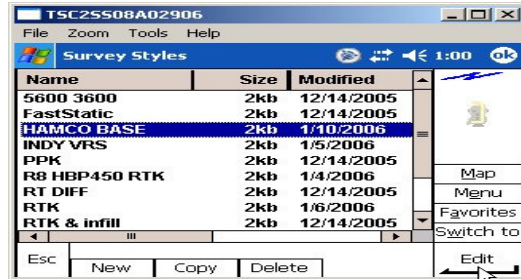
Select “Finish”.



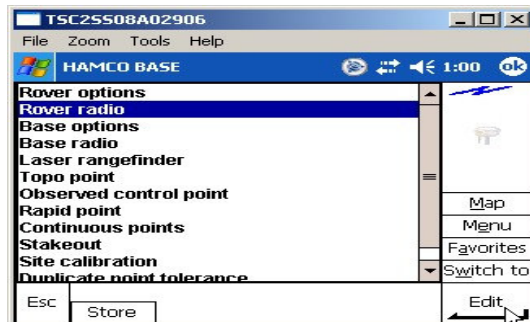
In Survey Controller, click on Configuration>Survey styles.



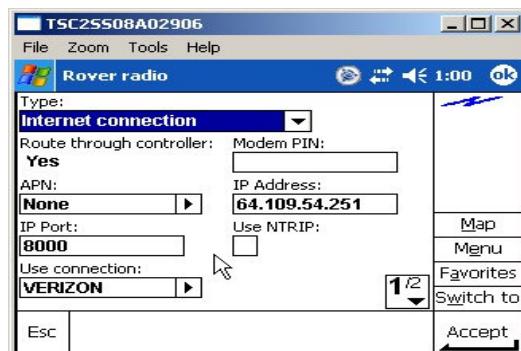
Select/Create the style you wish to use the phone connection with.



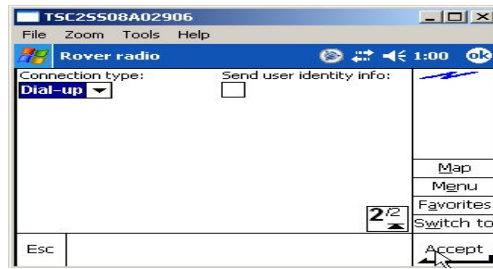
Select "Rover radio" then click on Edit in the lower right corner.



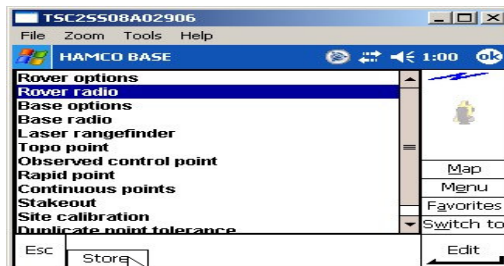
Make sure you have "Type:" set to Internet connection. Verify/keyin the correct IP address and Port number. Make sure the "Use connection:" is set to the network connection you created for your singular modem. Click on the box in the lower right corner that displays 1/2.



Make sure the “Connection type:” is set to Dial-up. Click “Accept” in the lower right corner.



Select “Store” at the bottom of the display.



To make the Cingular connection, select the icon at the top of the data collector and select *99***1#.



If you are using a Bluetooth phone, select Configuration> Controller>Bluetooth.



Set the “Connect to modem:” to the Bluetooth connection you created for your phone. Click “Accept” in the lower right corner.

