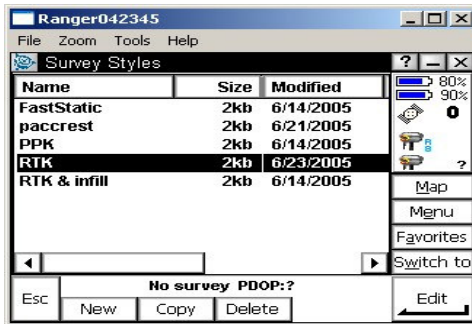
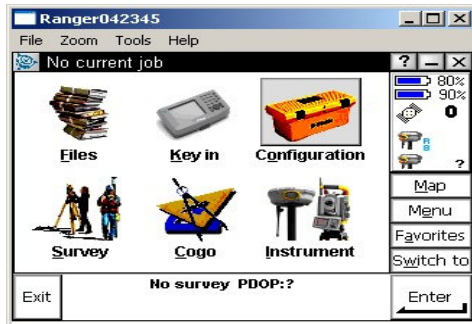


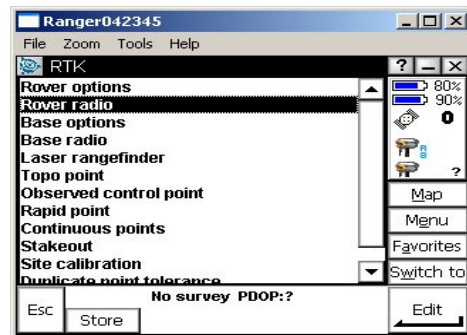
**Seiler Instrument Company**  
INTERNAL RADIO FREQ. SELECTION  
CREATED BY:  
JIM WYANT



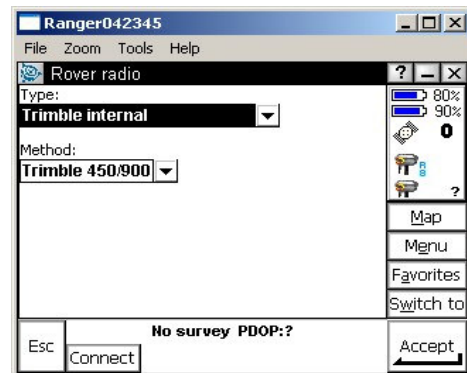
Select Configuration>Survey Styles>(RTK style you use).



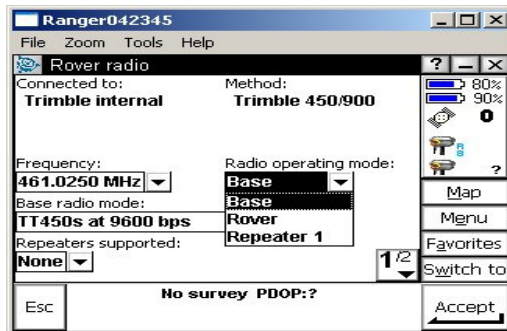
Select "Rover radio" and click Edit in the lower right hand corner.



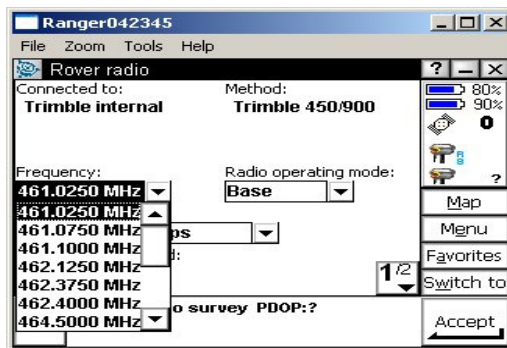
Click the "Connect" button at the bottom of the screen.



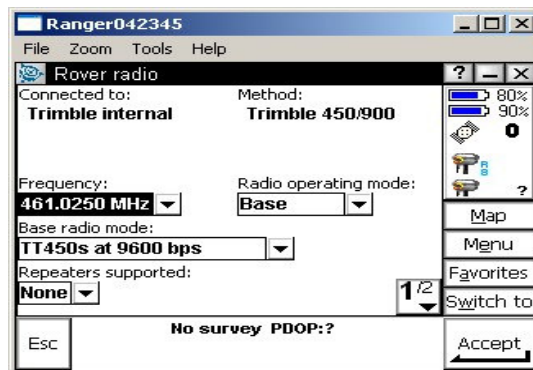
The R8's (if equipped) can be set as a “Rover” or can broadcast as a “Base” station. Select the proper radio mode i.e. Base or Rover etc.



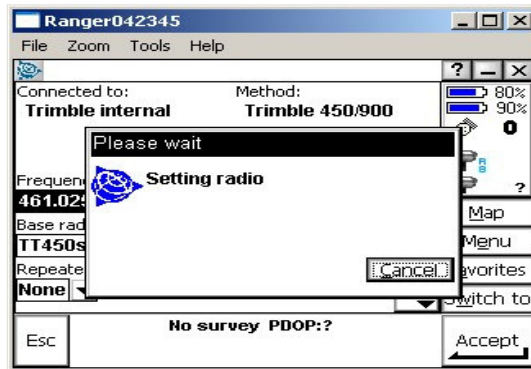
Make sure the Frequency on the rover is IDENTICAL to that broadcasting on the base!!



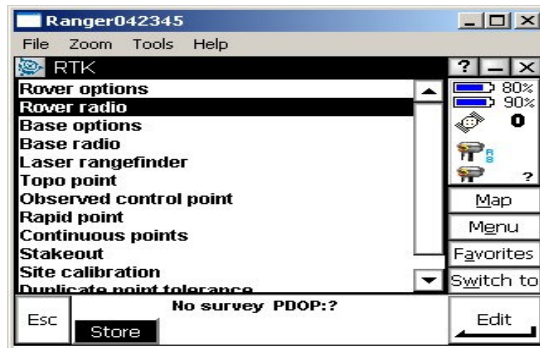
Verify the “radio mode” is IDENTICAL on the base and rover (i.e. TT450s at 9600, TT450s at 4800, etc.).



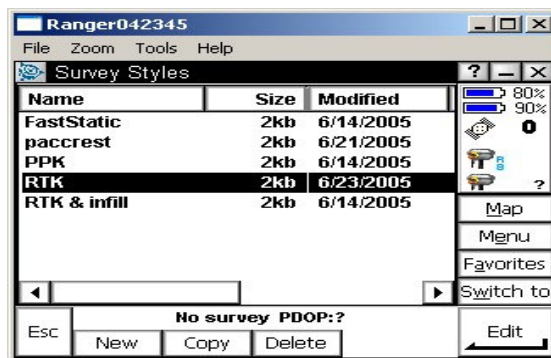
Click “Accept” in the lower right hand corner.



Click Store at the bottom of the screen.



Click ESC in the lower left hand corner.



**Note: It is crucial that the Frequencies and Radio Mode be set identical on the base and rover radios. If using an R8 receiver with the internal broadcast functionality, be sure you have the correct operating mode selected (i.e. base receiver set to base, and rover receiver set to rover.).**