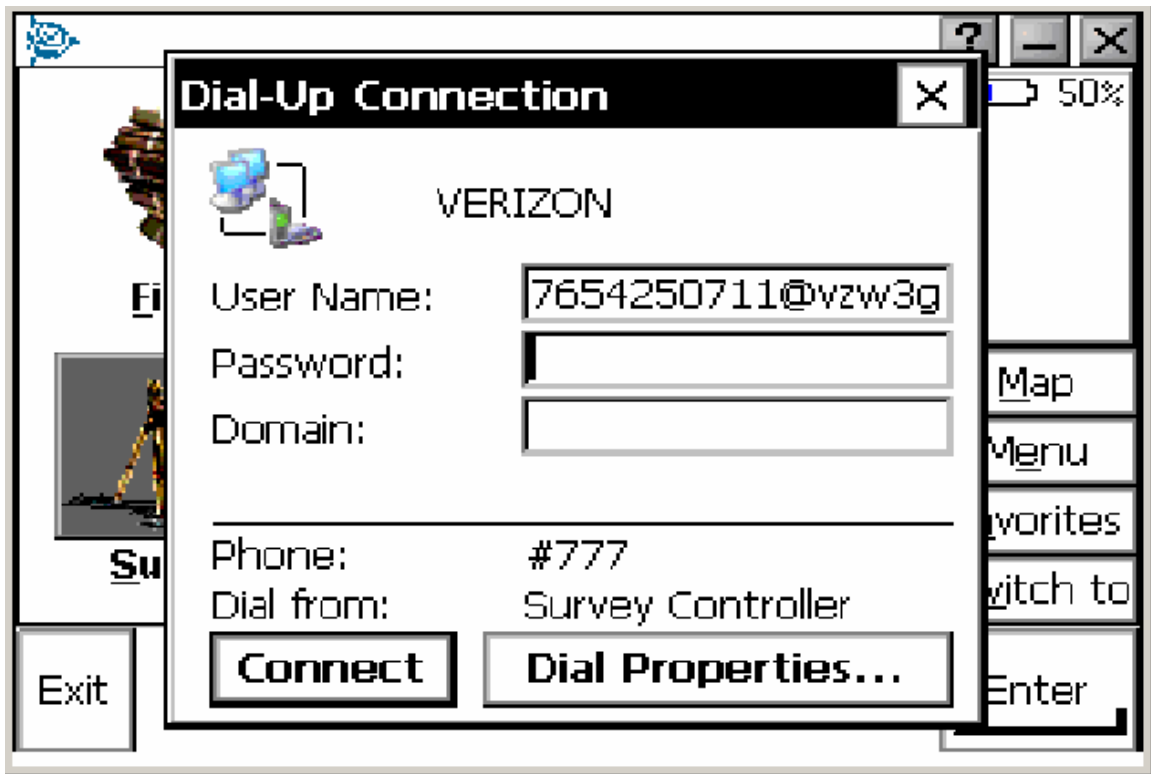


# Modem Connection

When you connect the phone cable to the data collector and a dialog box appears asking if you want to connect to desktop, select NO.

Key in vzw (lower case letters) in the password dialog when the Dial-UP Connection dialog box appears.



(Note: You will have to “click” in the password field and **immediately** select the letter you are keying in for the password. You will have to repeat this procedure for each letter of the password.)